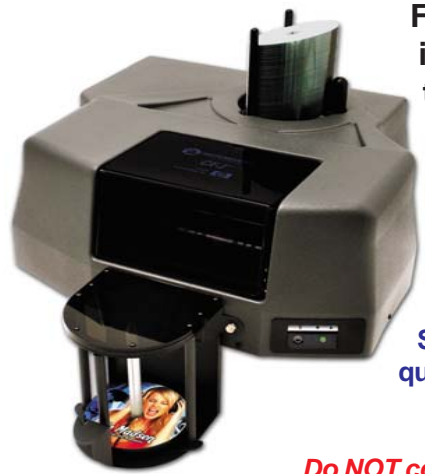


# PF-3 Print Factory Installation Quick Reference Guide

for Windows 7, Vista, or XP



For a more in-depth look at the installation process, please refer to the Installation section of the User's Manual.

Be sure your computer meets the Minimum System Requirements as stated in the User's Manual and that you have read these instructions and the Manual prior to contacting Microboards Technical Support with installation or configuration questions!

**Do NOT connect your PF-3 Print Factory to your computer until you are prompted to do so by the PF-3 Print Factory Installer**

## PF-3 Print Factory Installation:

You should not attempt to install the PF-3 Print Factory unless you are logged on to your PC with administrative rights.

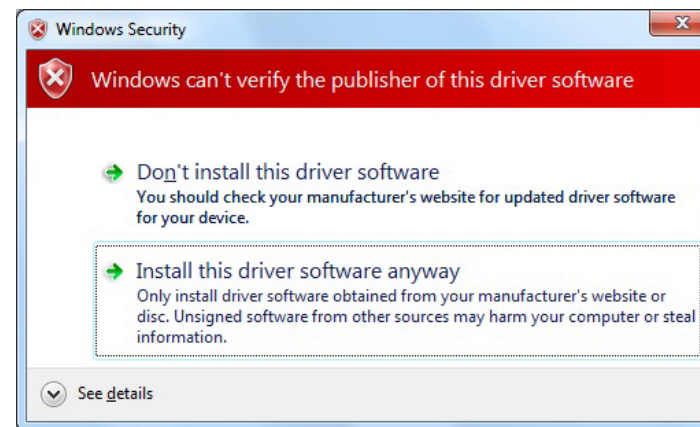
The hardware and much of the software installation will occur without intervention.

1. Unpack the PF-3 Print Factory and place it in the selected workspace. This space should have enough vertical space to allow for easy loading of media into the input hopper and have enough room to the back of the PF-3 Print Factory to allow the unloading of rejected discs.
2. Insert the PF-3 Print Factory Installation disk into the CD/DVD ROM drive on your computer. The installer should open automatically.

Select **Microboards PF-3 Print Factory** from the list, then click the **Install Microboards PF-3 Print Factory** button that appears.



- A. If the installer does not automatically open, click the **Start** button and select Run from the Start menu. Click the **Browse** button and go to the CD/DVD drive, highlight **MBInstall.exe**, click the **Open** button, then click **OK**.
  - B. Prerequisite Windows components may need to be installed before the PF-3 Print Factory can be installed. If any prerequisites are not present, they will be installed at this point. You will not be able to install your PF-3 Print Factory without installing the prerequisite components. You may need to reboot the PC after any prerequisites are installed. The PF-3 Print Factory installer will launch automatically after rebooting.
3. You will first be guided through the hardware setup. **Please follow all directions on each window before clicking the Next button.**



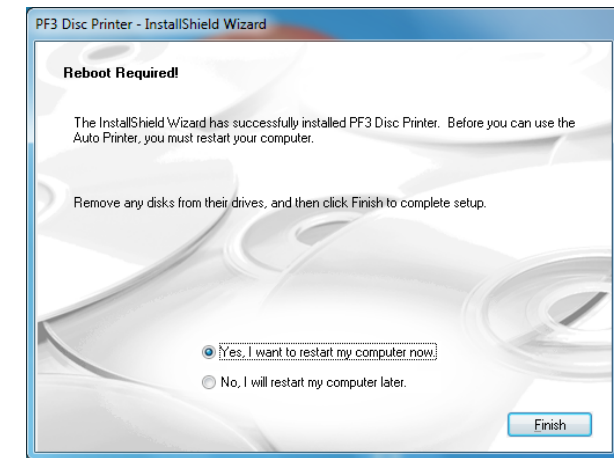
During the Installation process, you may see windows appear that refer to the drivers not being verified by the operating system. Should any of these windows appear, click the option to install the driver software.

**If you do not install the driver software, your hardware will not run successfully!**

4. After the physical hardware setup is complete, you will be instructed to connect the PF-3 Print Factory to the computer. Once this occurs, Windows will find your new hardware and run through the driver installation process.

You may see an indication that a hardware device was not completely installed. This is not unusual; the hardware installation will complete after the PC is rebooted. Continue through the Installer to the last window.

5. **Rebooting your PC is required before attempting to run your PF-3 Print Factory!** Click the **Finish** button to do so.



## The Microboards Printer Toolbox Installation

The Microboards Toolbox is installed silently during the PF-3 installation. This application is used for general maintenance functions.

After the installation completes, the Toolbox will start up. You will see an icon appear in the tool tray in the lower right corner of your Windows desktop. To access the Toolbox, double-click the icon circled below.

The Toolbox will also automatically start up after rebooting the PC.



**For more information on configuration options, please see the PF-3 Print Factory Configuration Quick Reference Guide on the other side of this page, or refer to the appropriate sections of the User's Manual.**

## Installation Troubleshooting Guide:

Hardware not installing on PC	<ol style="list-style-type: none"> <li>1. Turn on power to PF-3 Print Factory (back panel)</li> <li>2. Reseat USB connection</li> <li>3. Installation CD in drive?</li> </ol>
Printer not responding	<ol style="list-style-type: none"> <li>1. Ink cartridge installed correctly?</li> <li>2. Turn on power to Printer (front and rear panels).</li> </ol>

In order to guarantee quality results from the PF-3 Print Factory,

**ONLY V102C and V101B  
INK CARTRIDGES CAN BE USED!**

As is true with all printers, the quality of ink cartridge and the quality of the ink within the cartridge will affect your output. To ensure quality results, the PF-3 Print Factory will not operate with any other ink cartridges in place.

**The use of refilled ink cartridges will void your warranty!**

## Print Image Diameter Settings

The Microboards PF-3 Print Factory includes the ability to mask the print image diameters to ensure that your media is not being printed outside of the printable surface. While SureThing Disc Labeling software creates circular templates 120mm in diameter, other applications may not limit the design to the correct size.

The default Inner Diameter setting is 360 (36mm). If you are using a print template with an inner hub of less than 36mm, you must change the Inner Diameter setting to match that of the template for the image to print correctly.

To change the Diameter settings, please follow these steps:

1. Access the Printing Preferences for the Microboards PF3. How this is done will depend on the Operating System and the currently selected Start Menu layout.

**Windows 7:** Select **Devices and Printers** from the **Start** button.

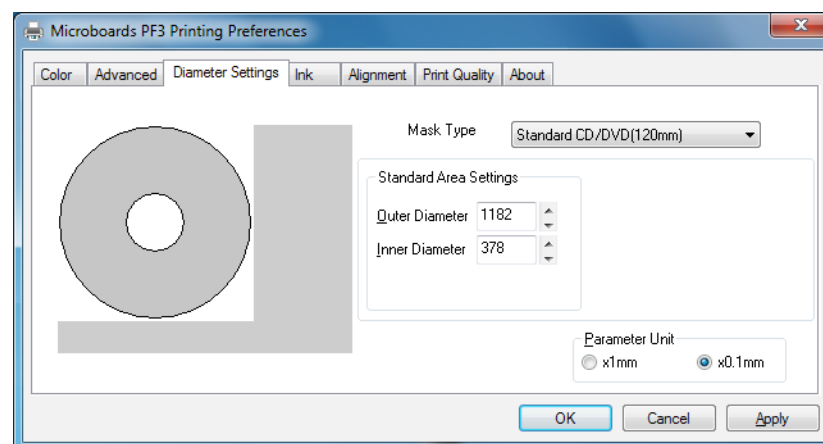
**Windows Vista:** Select the **Control Panel** from the **Start** button. Once the Control Panel opens, select **Printer** from the **Hardware and Sound** section.

**Windows XP, Start Menu layout:** Select **Printers and Faxes** from the **Windows Start** button.

**Windows XP, Classic Start Menu layout:** You will need to go to the **Settings** selection, then to the **Printers and Faxes** from the **Start** button.

2. Click the **Diameter Settings** tab.
3. The **Outer Diameter** setting will define where the masking clips the outer edge of the print image. In the example shown below, the image will print to the default diameter of 118mm (the Parameter Unit is set to 0.1mm).

The **Inner Diameter** setting will define how far towards the center of the disc the image will print. This setting will need to be changed when printing to hub-printable media.



4. Click the **Apply** button to save the changes.

## Print Image Alignment

Your PF-3 Print Factory has been factory aligned to .1mm precision. Fine tuning may be required depending on the media brand and printable surface type you are using to provide full surface coverage.

1. Access the Printing Preferences for the Microboards PF3. How this is done will depend on the Operating System and the currently selected Start Menu layout.

**Windows 7:** Select **Devices and Printers** from the **Start** button.

**Windows Vista:** Select the **Control Panel** from the **Start** button. Once the Control Panel opens, select **Printer** from the **Hardware and Sound** section.

**Windows XP, Classic Start Menu layout:** You will need to go to the **Settings** selection, then to the **Printers and Faxes** from the **Start** button.

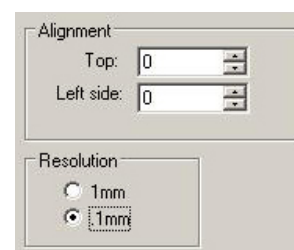
**Windows XP, Start Menu layout:** Select **Printers and Faxes** from the **Windows Start** button.

**NOTE: THE ALIGNMENT VALUES MUST BE ENTERED THROUGH THE PRINTING PREFERENCES FOR THE SETTINGS TO BE USED FROM WITHIN ANY APPLICATION!!!**

2. Right click on the icon for the **Microboards PF3** and select **Printing Preferences...**
3. On the **Print Quality** tab, select **Photo** for the **Print Mode** and **Best** or **Max DPI** for the **Print Quality**.

**Photo Best** or **Max DPI** should *always* be selected when aligning the printer, in order to insure the greatest accuracy during the alignment process. Other settings may not result in the best alignment.

4. Select the **Alignment** tab. The **.1mm Resolution** setting must be selected before setting alignment values (see below). Set the **Top** and **Left Side** alignment values to those required for image alignment.



These settings will change the size of the top and left margins, respectively. Decreasing the values will move the image up or to the left, increasing will adjust down or to the right.

5. Click the **Apply** button to save the changes, found on the bottom of the Printing Preferences window.
6. Verify the alignment by printing a full disc image on the media. Repeat these steps if further alignment adjustments are required.

**For further details on the alignment process, please refer to the section on Alignment in the PF-3 Print Factory User's Manual.**

## Printer Toolbox

The **Printer Toolbox** contains several utility functions for the PF-3 Print Factory. The toolbox will open automatically after installation of the PF-3, and each time the PC boots up. It can also be run by double-clicking the **PF3 Toolbox** icon in the tool tray.

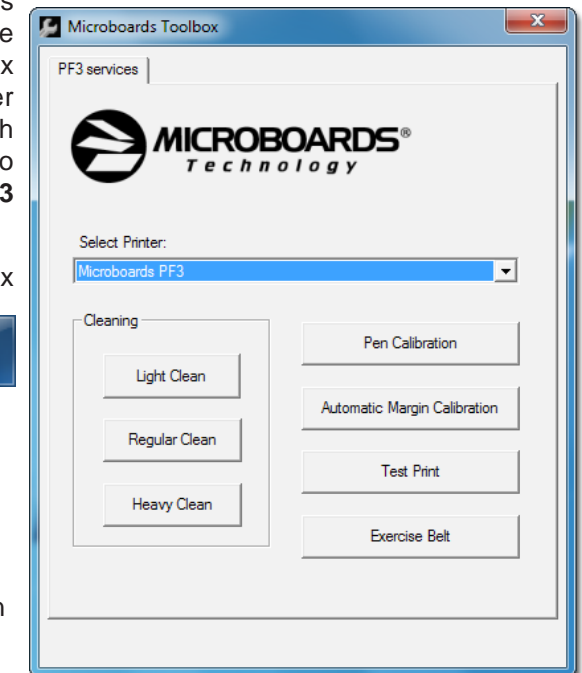
The functions of the Toolbox



include:

- Printhead Cleaning Utilities
- Pen Calibration
- Automatic Margin Calibration
- Test Print
- Belt Exerciser
- Low Ink warnings

For more information on the Toolbox, please refer to the User's Manual.



**Be sure your computer meets the Minimum System Requirements as stated in the User's Manual and that you have read these instructions and the Manual prior to contacting Microboards Technical Support with installation or configuration questions!**

In order to guarantee quality results from the PF-3 Print Factory,

**ONLY V102C and V101B  
INK CARTRIDGES CAN BE USED!**

As is true with all printers, the quality of ink cartridge and the quality of the ink within the cartridge will affect your output. To ensure quality results, the PF-3 Print Factory will not operate with any other ink cartridges in place.

**The use of refilled ink cartridges will void your warranty!**