



**MICROBOARDS**<sup>®</sup>  
*Technology*

# **LightScribe Template Labeler**

**for the Microboards  
HCL and QDL Duplicators**

## **Users Manual**



# TABLE OF CONTENTS

- LIGHTSCRIBE SOFTWARE INSTALLATION .....5**
  - Minimum Operating System Requirements.....5*
  - Minimum Hardware Requirements .....5*
  - Software Installation.....5*
- CREATING AND BURNING LABEL FILES.....7**
  - Design your Labels .....7*
  - Create your Label Files .....8*
  - Burn your Label Files.....9*
- TROUBLESHOOTING .....9**
- TECHNICAL SUPPORT .....9**



# LightScribe Software Installation

## Minimum Operating System Requirements

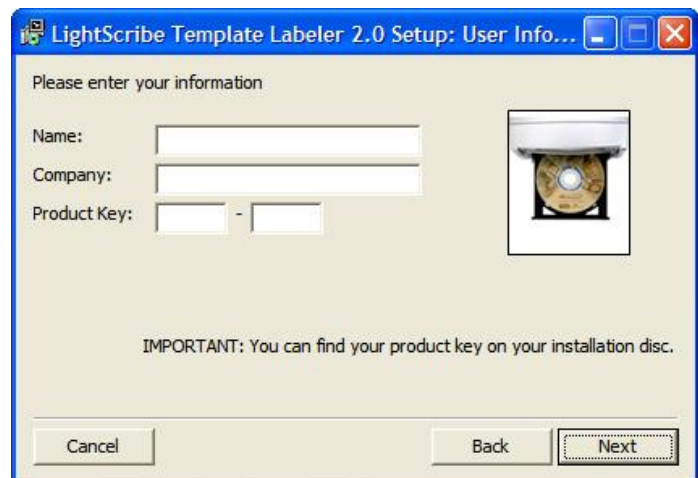
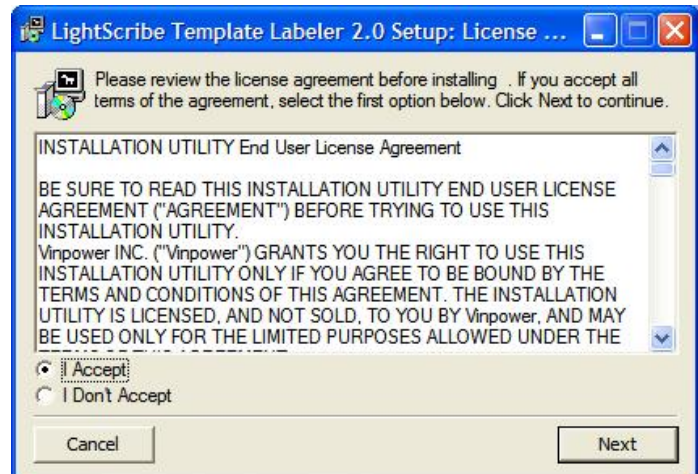
Windows 2000, XP, 2003 or Vista

## Minimum Hardware Requirements

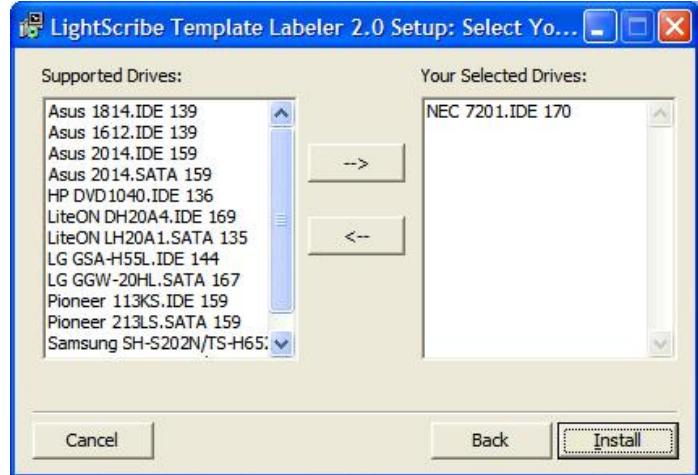
- Pentium 3 Class microprocessor or better
- CD/RW Recorder
- 32Mbytes of RAM
- 10Mbytes of free disc space on your hard drive

## Software Installation

1. Insert the LightScribe Installation Disc into the CD drive of your computer.
  2. Using the "My Computer" icon or Windows Explorer, click on the CD drive
  3. From the CD Drive, double-click the setup.exe to run the setup program.
  4. Follow the Installation Wizard to start the installation process, see screen below:
- 
5. During the installation process, you will be prompted for a Product Key. The product key can be found on the Installation Disc.



- 6. You will then be asked to choose the LightScribe writer model that was installed in your duplication system. The default writer that comes with your system should be pre-selected. You can then click Install to continue the installation process.

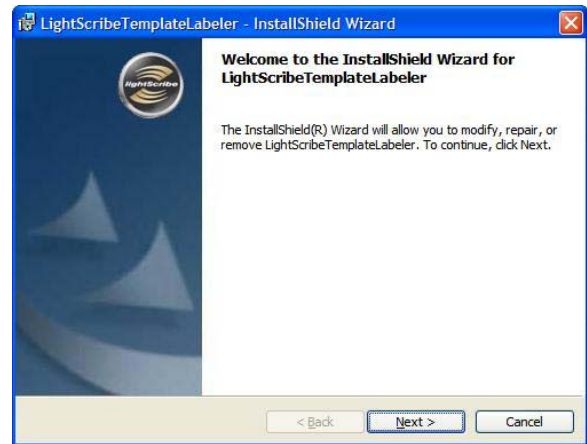


- 7. During the installation process, the following applications will be installed:

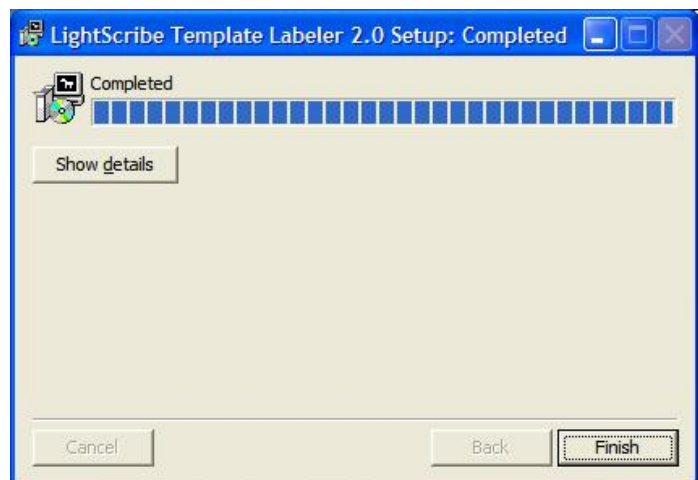
**LightScribe System Software**



**Template Labeler**



- 8. Upon successful installation of the above software, click the Finish button to complete the installation.



## Creating and Burning Label Files

The instructions covered in this section will help you design and create a label for your LightScribe autoloader.

Please note that you must install the supplied LightScribe software in order to proceed with the instructions below. If you have any difficulties installing the software, please contact Tech Support for assistance.

### Design your Labels

#### Step 1: Launch the *LightScribe Template Labeler*

- By clicking the shortcut icon on your desktop.
- Or you can find the program launch shortcut in **Start > All Programs > LightScribe Direct Disc Labeling > LightScribe Template Labeler**.

Since the software is being used for design and layout purposes only, please ignore the "LightScribe Disc Insertion" prompt below by pressing the **OK** button.

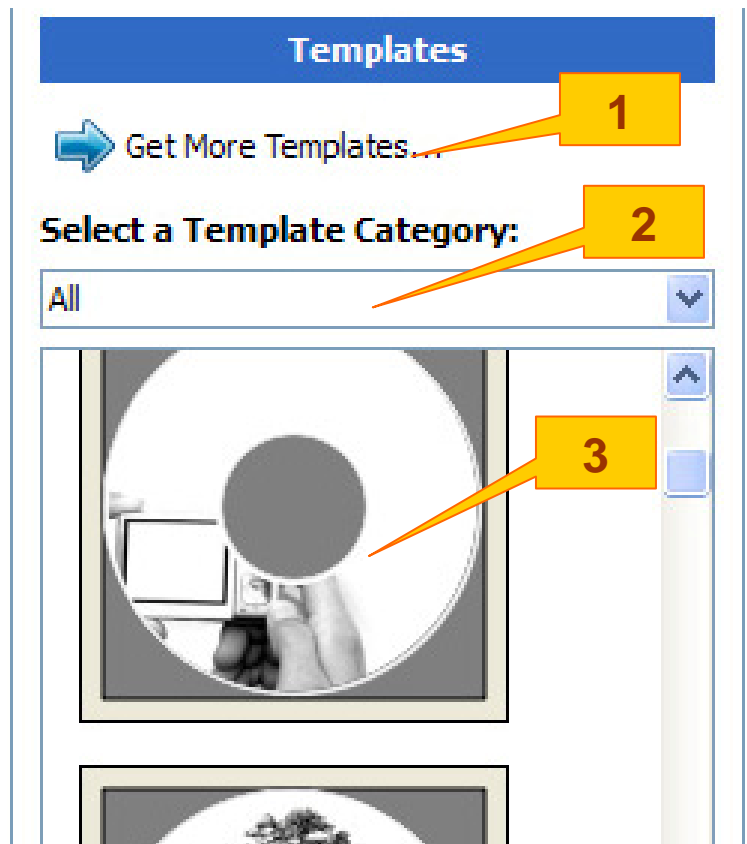


#### Step 2: Select the Template

- Choose one of the preinstalled templates, or click "Get More Templates" to download additional templates. (1)
- Select the Category filter function to better view and choose a template. Note that each template may appear in multiple categories. (2)
- Click your Template choice. (3)

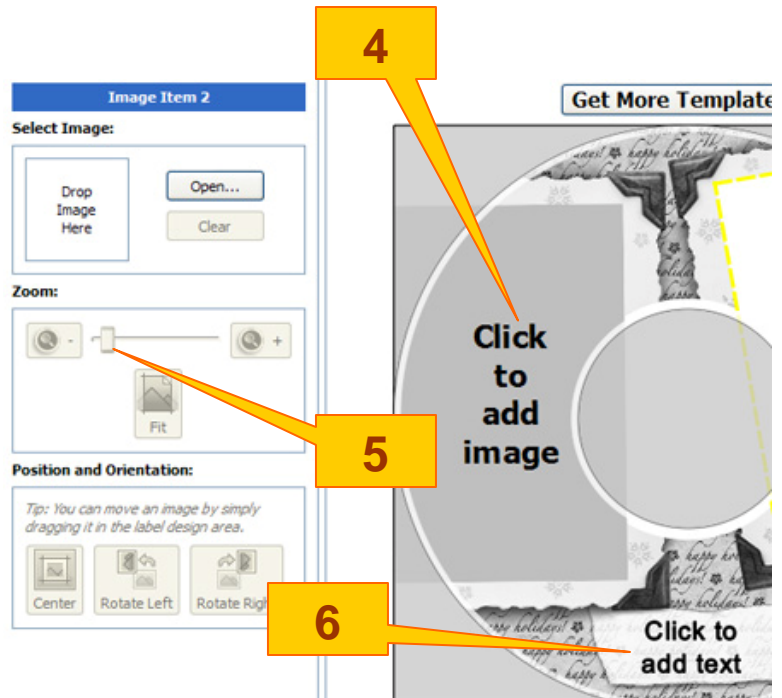
If you prefer more advanced design capabilities instead of the pre-designed templates, you can do following:

- a. Design your own CD label artwork using a more advance design software like Adobe PhotoShop. Please be aware of the need for high-contrast in your artwork for the image to be clear when printed.
- b. Export your completed CD artwork as a picture format like bmp, jpeg, png, etc.
- c. Choose an empty template from the Template Labeler and add the exported CD artwork pictures into the empty template.



### Step 3: Inserting Text or Pictures

- Depending on the template chosen, you may have the option to modify the text box(s) or picture(s).
- For inserting pictures, just click the dedicated area to select the picture you'd like to use. (4)
- Use the Zoom button or the scroll wheel of your mouse to size the picture, and then drag it to position where you want it within the selection window. (5)
- For text, just click the text field, and then type the text you'd like to appear within the text field. Note you can enter multiple lines of text depending on the template chosen. (6)



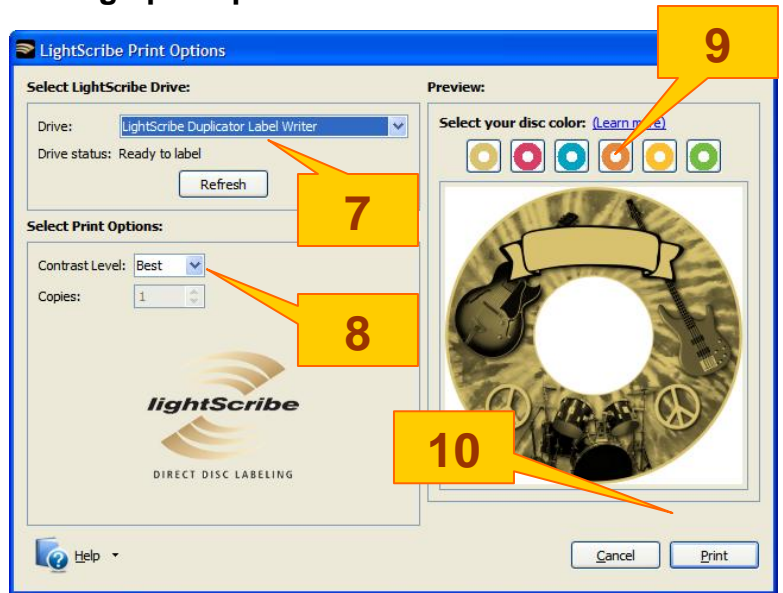
## Create your Label Files

### Step 4: Click "Preview and Print" to bring up the print window.

- Select the **LightScribe Duplicator Label Writer** as the LightScribe Drive. (7)
- Select the Contrast Level. **Best** will result in the darkest print. (8)
- Select the label surface color of the disc you wish to label onto. (9)
- If you are satisfied with the preview, click "Print" to begin generating the Duplicator Label file (.lsl files). (10).

You will be asked for the location and name of the label file(s) you wish to generate.

**NOTE:** The file name must only contain the 26 Greek alphabet characters (a-z, either upper or lower case), numerals, or some basic symbols like "-". Using other characters may result in print files that cannot be recognized by the HCL or QDL Duplicator.





## Burn your Label Files

### Step 5: Create a Label CD

- Locate the label file(s) (.lsi files) on your PC.
- Create a Data CD with the label file(s) via a CD/DVD Creating Software; like Nero Burning-ROM or Roxio Classic CD Creator.

***Do NOT place the label file(s) under any directory/folder of the Label CD. Failure to do so will result in the label file(s) not being recognized by your system.***

## Troubleshooting

### ***Why do I get a “Label Not Found” error message on my HCL or QDL?***

- The label file name may contain symbols or foreign characters that cannot be recognized. You should only use alpha-numeric characters in the file name.
- Please verify that the label file has an “.lsi” extension, like “abc.lsi”. A common mistake is to save the file, creating a file with an “.lsl” extension rather than printing the image file.
- The label file may not be located directly on the root of your data CD. Placing the files within a folder or directory on the disc will cause them to not be found.
- Please verify that the Label CD was **not** created under Roxio’s Drag to Disc, Nero’s InCD or Windows XP or Vista’s built-in burning software. These applications can create discs on which the .lsi files cannot be recognized.
- Please verify that the correct writer was selected during the software installation.

### ***Why does my artwork look clear, but appear indistinct when printed?***

- The image file was not printed using the Contrast Level of **Best** (see page 8). Lower contrast levels will print faster, but the image will not be printed as dark as with the Best contrast level. Setting the contrast level can only be done when the print image file is created.
- LightScribe printing, like many gray-scale print methods, is best suited to high-contrast images. You may need to boost the contrast of your original artwork to produce a clearer printed image.

## Technical Support

For technical questions or support issues, contact Microboards Technology technical support:

**United States**  
PH: 952-556-1639  
FAX: 952-556-1628  
[support@microboards.com](mailto:support@microboards.com)  
[www.microboards.com](http://www.microboards.com)

**Europe**  
PH: +44 (0) 845 230 7800  
[www.microboards.co.uk](http://www.microboards.co.uk)

**Japan**  
PH: 03-3561-2266  
[www.microboards.co.jp](http://www.microboards.co.jp)

Please have as much information as possible, including the Model and Serial Number of your Microboards HCL or QDL LightScribe Duplicator, available when contacting Technical Support.