

GX-1 Disc Publisher Installation Quick Reference Guide

for Windows 2000 & XP

For a more in-depth look at the installation process, please refer to the Installation section of the User's Manual.

Be sure your computer meets the Minimum System Requirements as stated in the User's Manual and that you have read these instructions and the Manual prior to contacting Microboards Technical Support with installation or configuration questions!

GX-1 Disc Publisher Installation:

Do NOT connect your GX-1 Disc Publisher to your computer until you are told to do so!!

1. Unpack the GX-1 Disc Publisher and place it in the selected workspace. This space should have enough vertical space to allow for easy loading of media into the input hopper and have enough room to the left of the GX-1 Disc Publisher to allow access to the reject tray.
2. Insert the GX-1 Disc Publisher Installation disk into the CD/DVD ROM drive on your computer. The installer should open automatically.

If the installer does not automatically open, click the **Start** button and select Run from the Start menu. Click the **Browse** button and go to the CD/DVD drive, highlight **Setup.exe**, click the **Open** button, then click **OK**.



Please follow all directions on each window before clicking the Next button.

3. You will first be guided through the hardware setup. Do not click the Next button until you have completed each step.
4. After the physical hardware setup is complete, you will be instructed to connect the GX-1 Disc Publisher to the computer. Once this occurs, Windows will find your new hardware and run through the driver installation process. There will be five components that need to be installed.



5. **Windows 2000:** Select the option to Search for a suitable driver, and click **Next**. Check the CD-ROM Drives Box and click **Next**. Click the **Next** button again when you are notified that the driver has been found.

Windows XP: Do not allow the Search the Internet option to attempt to find the drivers for you. Select the option to Install from a list or specific location and click **Next**. Check the Search Removable Media box and click **Next**.

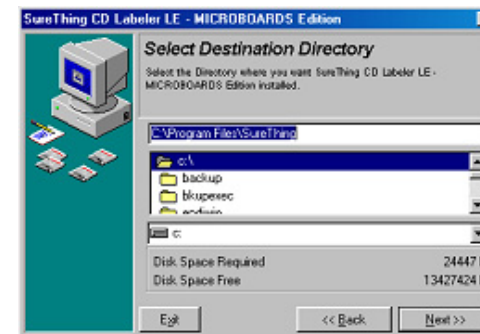


6. Once the drivers for this component have been installed, click the **Finish** button.
7. Steps 5 and 6 will be performed once for each component of the hardware installation. The components are: **USB Serial Converter**, **USB Serial Port**, **Microboards GX Series**, **Microboards GX Series (DOT4)**, and **Microboards Series (STORE)**. Order of the installation may vary. If the Microsoft Digital Signature screen appears, click the **Yes** or **Continue Anyway** button at the bottom of the screen.

Installation of SureThing CD Labeller, the Publisher Controller, and PrassiTech Zulu2 will occur next.

8. SureThing CD Labeler Installation:

- A. Read the Software License and Warranty information and click the **I Accept** button to continue the installation of SureThing.
- B. Click the **Next** button at the Welcome screen.
- C. To install to the default directory, click **Next** on the Select Destination Directory screen. If you wish to install to a different location, select that location before clicking **Next**.
- D. Select the option to add a desktop shortcut and the location in which the Start Menu shortcut will be created, or make no changes to select the default locations. Click **Next** when the locations are suitable.
- E. Click **Start** on the next screen to install the application.
- F. Click **Finish** once the installation is complete. You will also have the opportunity to register the software on-line.



9. GX-1 Disc Publisher Controller Installation:

- A. Click the **Next** button on the next window. Once the window reads **Ready to Install the Program**, click the **Install** button. Click **Finish** once the installation completes. The Zulu2 software installation will begin automatically.

10. PrassiTech Zulu2 Installation:

- A. Click the **Next** button to begin the Zulu2 installation process.
- B. After the installation process completes, click **Finish** without removing the check from the **Reboot Computer** box. The computer will need to be rebooted for the software to operate correctly.

If you choose not to reboot at this time, remove the check from the **Reboot Computer** box and click **Finish**. Remember, the computer must be rebooted prior to running the GX-1 Disc Publisher, Zulu2, or SureThing.

Installation of the GX-1 Disc Publisher is complete. After rebooting, the printer will need to be aligned and the robotics configured prior to burning and printing disks. Please see the GX-1 Disc Publisher Configuration Quick Reference Guide on the other side of this page, or refer to the appropriate sections of the User's Manual.

Installation Troubleshooting Guide:

Hardware not installing on PC	<ol style="list-style-type: none"> 1. Turn on power to GX-1 Disc Publisher (back panel) 2. Reseat USB connection 3. Installation CD in drive?
Printer not responding	<ol style="list-style-type: none"> 1. Ink cartridge installed correctly? 2. Turn on power to Printer (front panel). Firmly press the power button and wait several seconds for the printer power LED to come on.
Drive not appearing in Windows Explorer	<ol style="list-style-type: none"> 1. PC needs to be rebooted 2. Mapped drive conflict: Disconnect GX-1 Disc Publisher and reboot PC. Disconnect Network drives and remap to letters near end of alphabet. Reconnect GX-1 Disc Publisher.

In order to guarantee quality results from the GX-1 Disc Publisher,

**ONLY MICROBOARDS GX-200HC
COLOR INK CARTRIDGE CAN BE USED!**

As is true with all printers, the quality of ink cartridge and the quality of the ink within the cartridge will affect your output. To ensure quality results, the GX-1 Disc Publisher will not operate with any other color ink cartridge in place.

The use of refilled ink cartridges will void your warranty!

GX-1 Disc Publisher Configuration Quick Reference Guide

for Windows 2000 & XP

GX-1 Disc Publisher Controller Configuration

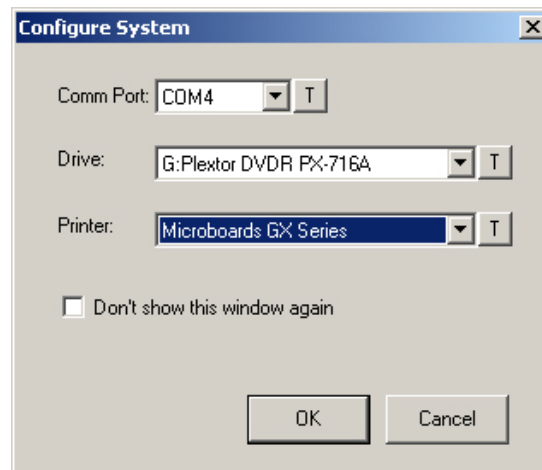
NOTE: You must complete the hardware, driver, and software installation prior to configuring the GX-1 Disc Publisher and aligning the printer. Please see the other side of this Guide for the Installation Quick Reference Guide, or refer to the Installation section of the User's Manual.

The GX-1 Disc Publisher controllers will need to be configured prior to use. When launching Zulu2 for the first time, the Configuration screen will appear.

Comm Port: Select the COM port from the drop-down list that is specified by the PC as the USB Serial Port in the Windows Device Manager (see User's Manual for more information); generally, the correct port will be the largest port number listed. Verify the correct port selection by clicking the **T** button to the right of the port list. The flippers below the input hopper will lift and then drop if the correct port has been selected.

Drive: Select the drive letter from the drop-down list. Verify the correct drive selection by clicking the **T** button; the drive tray in the GX-1 Disc Publisher should eject and then retract.

Printer: Select **Microboards GX Series** from the drop-down list. Once selected, click the **T** button to verify that the selection; the belts will run if the correct printer has been selected.



Once the settings are set, place a **check** in the **Don't show this window again** box. This will bypass the controller configuration when Zulu2 is started. To show the configuration screen again when Zulu2 is started, select **Utilities** from the Zulu2 **Robotics** menu and place a **check** in the **Enable Configure Dialog** box.

NOTE: If Windows reassigns drive letters for any reason, you will need to re-enable the configuration dialog and repeat the steps above before the GX-1 Disc Publisher will function correctly!

Click the **OK** button to accept the selections and open Zulu2.

For more information on the configuration of the GX-1 Disc Publisher Controller, please refer to the Configuration section of the User's Manual.



Printer Alignment

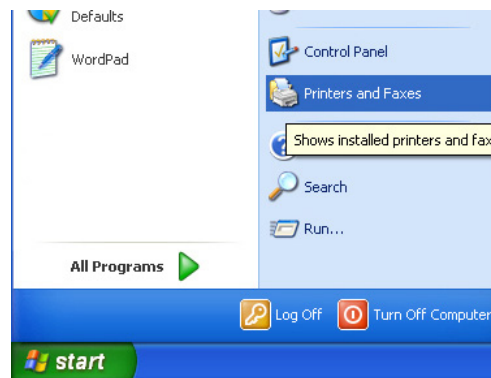
Your GX-1 Disc Publisher has been factory aligned to .1mm precision. The values provided with the GX-1 Disc Publisher, located on the back of the unit below the power plug, are the offset values to be used in the Printing Preferences.

To set these values, please follow the steps listed below:

1. Install the GX-1 Disc Publisher, print drivers, SureThing labeling software, and PrassiTech Zulu2 as detailed on the front of this Quick Reference Guide, or in the Installation section of the **User's Manual**.

2. Select **Printers and Faxes** from the **Windows Start** button.

In Windows 2000 or Windows XP with the Classic Start Menu layout, you will need to go to the **Settings** selection, then to the **Printers and Faxes** from the **Start** button.



NOTE: IN BOTH WINDOWS 2000 AND WINDOWS XP, THE ALIGNMENT VALUES MUST BE ENTERED FROM THE START BUTTON FOR THE SETTINGS TO BE SET AS THE DEFAULT SETTINGS, NOT FROM WITHIN ANY APPLICATION!!!

3. Right click on the icon for the **Microboards GX Series** and select **Printing Preferences...**

4. On the **Paper/Quality** tab, select **Photo** for the **Paper Type** and **Best** for the **Print Quality**.

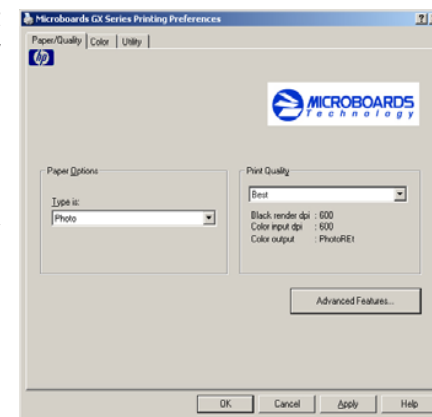
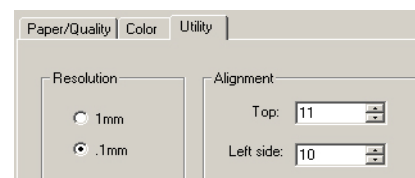


Photo Best should *always* be selected when aligning the printer, in order to insure the greatest accuracy during the alignment process. Other settings may not result in the best alignment.

5. Select the **Utilities** tab. The **.1mm Resolution** setting must be selected before setting alignment values (see below). Set the **Top** and **Left Side** alignment values to match those provided with the GX-1 Disc Publisher.

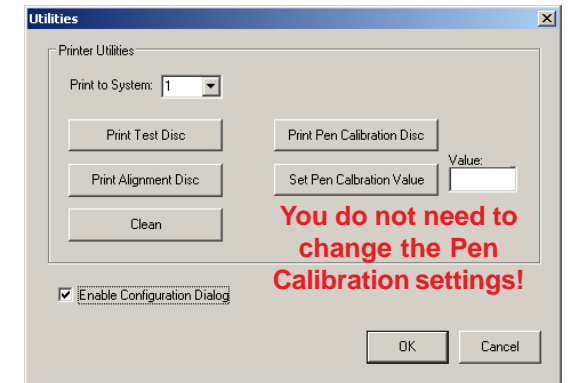


These settings will change the size of the top and left margins, respectively. Decreasing the values will move the image up or to the left, increasing will adjust down or to the right.

6. Click the **Apply** button to save the changes, found on the bottom of the Printing Preferences window.

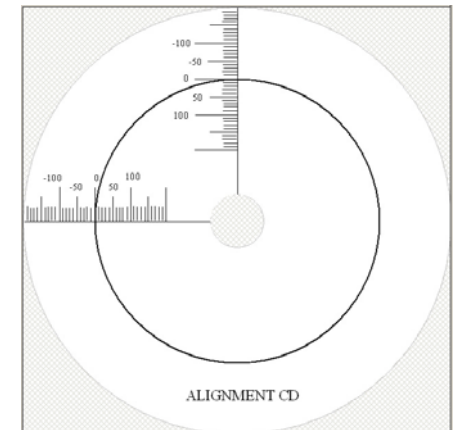
7. Start the Zulu2 application. Select **Utilities** from the **Robotics** menu. The window to the right will be displayed.

Place an alignment disc (provided) in the input hopper and click the **Print Alignment Disc** button. **Remember, the alignment CD should always be printed in Photo Best mode for the highest accuracy.**



8. Check the printed alignment disc. If the settings are correct, the horizontal and vertical crosshairs will intersect the printed circle at (0,0), as shown below. If not, **repeat steps 5 through 8**, changing the **Top** and **Left Side** amounts by those shown on the alignment CD.

9. Fine tuning may be required for different brands of media or different printing applications to provide full surface coverage. This can be done within the printing application to avoid altering these global alignment values set in the Printer Properties.



For further details on the alignment process, please refer to the section on Alignment in the GX-1 Disc Publisher User's Manual.

Be sure your computer meets the Minimum System Requirements as stated in the User's Manual and that you have read these instructions and the Manual prior to contacting Microboards Technical Support with installation or configuration questions!

In order to guarantee quality results from the GX-1 Disc Publisher,

ONLY MICROBOARDS GX-200HC COLOR INK CARTRIDGE CAN BE USED!

As is true with all printers, the quality of ink cartridge and the quality of the ink within the cartridge will affect your output. To ensure quality results, the GX-1 Disc Publisher will not operate with any other color ink cartridge in place.

The use of refilled ink cartridges will void your warranty!