

G3 Auto Printer Installation Quick Reference Guide

for Windows 7, Vista, and XP

For a more in-depth look at the installation process, please refer to the Installation section of the User's Manual.

Be sure your computer meets the Minimum System Requirements as stated in the User's Manual and that you have read these instructions and the Manual prior to contacting Microboards Technical Support with installation or configuration questions!



Do NOT connect your G3 Auto Printer to your computer until the Installer instructs you to do so!!

G3 Auto Printer Installation:

You should not attempt to install the G3 Auto Printer unless you are logged on to your PC with administrative rights.

The hardware and much of the software installation will occur without intervention.

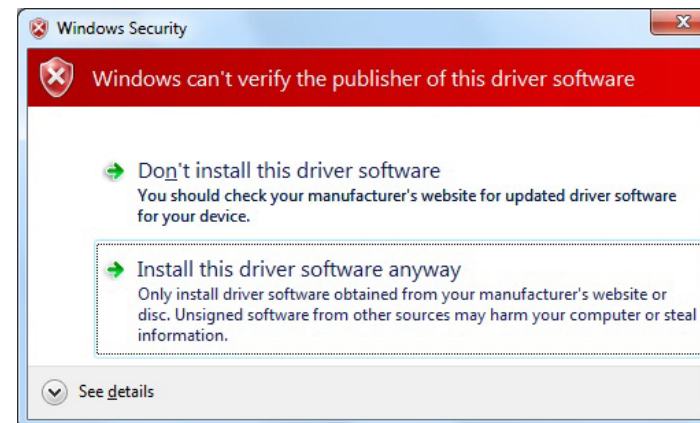
1. Unpack the G3 Auto Printer and place it in the selected workspace. This space should have enough vertical space to allow for easy loading of media into the input hopper and have enough room to the back of the G3 Auto Printer to allow the unloading of rejected discs.
2. Insert the G3 Auto Printer Installation disk into the CD/DVD ROM drive on your computer. The installer should open automatically.

Select **Microboards G3 Auto Printer** from the list, then click the **Install Microboards G3 Auto Printer** button that appears.



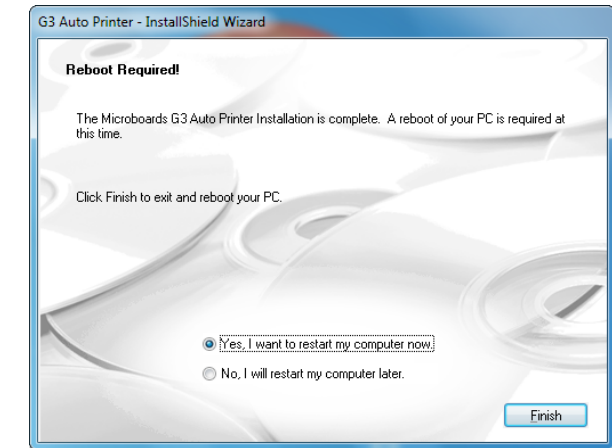
- A. If the installer does not automatically open, click the **Start** button and select Run from the Start menu. Click the **Browse** button and go to the CD/DVD drive, highlight **MBInstall.exe**, click the **Open** button, then click **OK**.
 - B. Prerequisite Windows components may need to be installed before the Auto Printer can be installed. If any prerequisites are not present, they will be installed at this point. You will not be able to install your Auto Printer without installing the prerequisite components. You may need to reboot the PC after any prerequisites are installed. The Auto Printer installer will launch automatically after rebooting.
3. You will first be guided through the hardware setup. **Please follow all directions on each window before clicking the Next button.**

During the Installation process, you may see windows appear that refer to the drivers not being verified by the operating system. Should any of these windows appear, click the option to install the driver software.



If you do not install the driver software, your hardware will not run successfully!

4. After the physical hardware setup is complete, you will be instructed to connect the G3 Auto Printer to the computer. Once this occurs, Windows will find your new hardware and run through the driver installation process.
You may see an indication that a hardware device was not completely installed. This is not unusual; the hardware installation will complete after the PC is rebooted. Continue through the Installer to the last window.
5. **Rebooting your PC is required before attempting to run your G3 Auto Printer!** Click the **Finish** button to do so.



The Microboards Printer Toolbox Installation

The Microboards Toolbox is installed silently during the G3 installation. This application is used for general maintenance functions.

After the installation completes, the Toolbox will start up. You will see an icon appear in the tool tray in the lower right corner of your Windows desktop. To access the Toolbox, double-click the icon circled below.

The Toolbox will also automatically start up after rebooting the PC.



For more information on configuration options, please see the G3 Auto Printer Configuration Quick Reference Guide on the other side of this page, or refer to the appropriate sections of the User's Manual.

Installation Troubleshooting Guide:

Hardware not installing on PC	<ol style="list-style-type: none"> 1. Turn on power to G3 Auto Printer (back panel) 2. Reseat USB connection 3. Installation CD in drive?
Printer not responding	<ol style="list-style-type: none"> 1. Ink cartridge installed correctly? 2. Turn on power to Printer (front panel). Press the power button and wait several seconds for the printer power LED to come on.

In order to guarantee quality results from the G3 Auto Printer,

ONLY MICROBOARDS GX-300HC COLOR INK CARTRIDGE CAN BE USED!

As is true with all printers, the quality of ink cartridge and the quality of the ink within the cartridge will affect your output. To ensure quality results, the G3 Auto Printer will not operate with any other color ink cartridge in place.

The use of refilled ink cartridges will void your warranty!

G3 Auto Printer Alignment

Your G3 Auto Printer has been factory aligned to 0.1mm precision.

You may need to fine tune the alignment settings for full surface coverage depending on the media brand and print surface type.

To set these values, please follow the steps listed below:



1. Access the Printing Preferences for the Microboards G Series. How this is done will depend on the Operating System and the currently selected Start Menu layout.

Windows 7: Select **Devices and Printers** from the **Start** button.

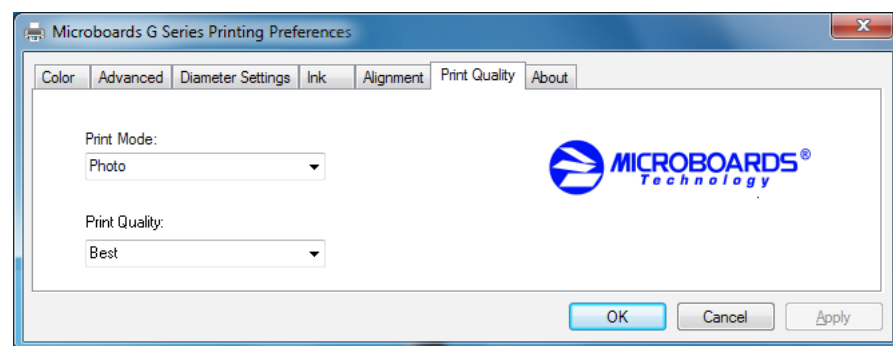
Windows Vista: Select the **Control Panel** from the **Start** button. Once the Control Panel opens, select **Printer** from the **Hardware and Sound** section.

Windows XP, Classic Start Menu layout: You will need to go to the **Settings** selection, then to the **Printers and Faxes** from the **Start** button.

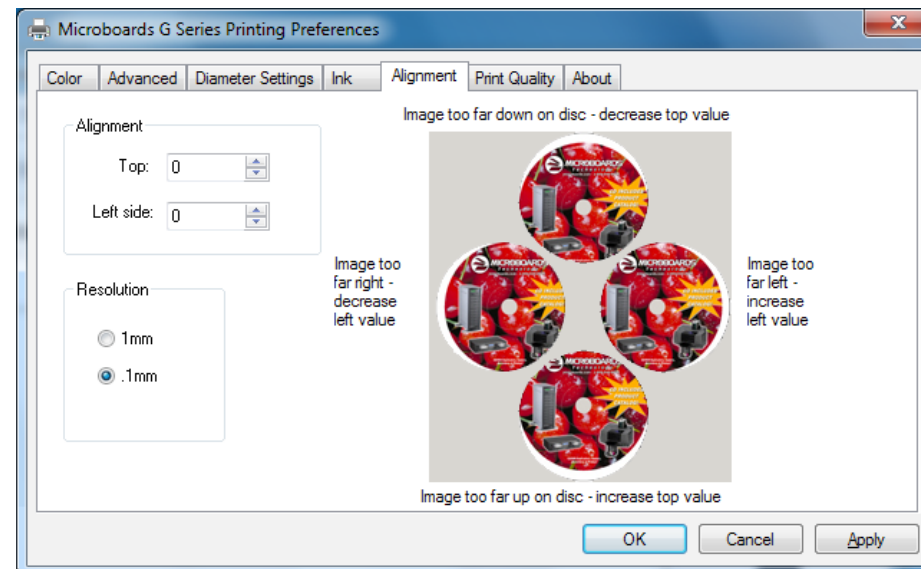
Windows XP, Start Menu layout: Select **Printers and Faxes** from the **Windows Start** button.

2. Right click on the icon for the **Microboards GX Series** and select **Printing Preferences...**
3. On the **Print Quality** tab, select **Photo** for the **Paper Type** and **Best** for the **Print Quality**.

Photo Best should *always* be selected when aligning the printer, in order to insure the greatest accuracy during the alignment process. Other settings may not result in the best alignment.



4. Select the **Alignment** tab. The **.1mm Resolution** setting must be selected before setting alignment values (see below). Set the **Top** and **Left Side** alignment values to those required for image alignment.



These settings will change the size of the top and left margins, respectively. Decreasing the values will move the image up or to the left, increasing will adjust down or to the right.

5. Click the **Apply** button to save the changes, found on the bottom of the Printing Preferences window.
6. Start the SureThing application. Select a pre-designed full-coverage SureThing disc image.

Place an blank disc in the input hopper and print the disc. **Remember, Photo Best mode should always be used when aligning the printer for the highest accuracy.**

7. Check the printed disc. If the settings are correct, the image should be centered on the disc. If not, **repeat steps 4 through 7**, changing the **Top** and **Left Side** amounts, using the graphic guide to the right of the alignment settings as a reference to how the values should be changed.

8. Fine tuning may be required for different brands and can be done within the printing application to avoid altering these global alignment values set in the Printer Properties.

For further details on the alignment process, please refer to the section on Alignment in the G3 Auto Printer User's Manual.

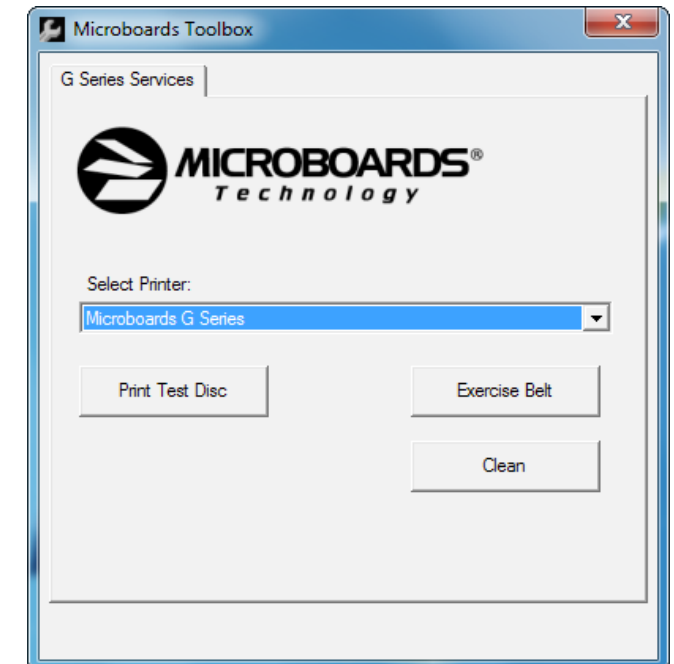
G3 Toolbox

Double-click the icon for the Microboards Toolbox that was placed on your PC's desktop during the installation process. The Test and Clean disc functions require blank media be loaded before the buttons are clicked.

Clicking the **Test Disc** button prints out a test pattern to verify the printer is functioning.

The **Exercise Belt** utility should be run if the printer has been idle for an extended period of time, and can be run multiple times if necessary. The belts will run at high speed for a period of time to recondition the belts. It is not necessary to load any media for this utility.

Clicking the **Clean Disc** button prints out a heavy ink-usage pattern to clear any clogged ink nozzles.



Be sure your computer meets the Minimum System Requirements as stated in the User's Manual and that you have read these instructions and the Manual prior to contacting Microboards Technical Support with installation or configuration questions!

In order to guarantee quality results from the G3 Auto Printer,

ONLY MICROBOARDS GX-300HC COLOR INK CARTRIDGE CAN BE USED!

As is true with all printers, the quality of ink cartridge and the quality of the ink within the cartridge will affect your output. To ensure quality results, the G3 Auto Printer will not operate with any other color ink cartridge in place.

The use of refilled ink cartridges will void your warranty!