



For a more in-depth look at the installation and configuration process, please refer to the appropriate sections of the User's Manual.

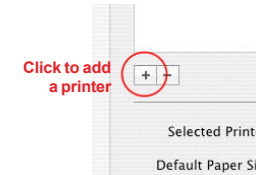
Be sure your computer meets the Minimum System Requirements as stated in the User's Manual and that you have read these instructions and the Manual prior to contacting Microboards Technical Support with installation or configuration questions!

PF-Pro Disc Printer Installation

1. Unpack the PF-Pro Disc Printer and place it in the selected workspace. This space should have enough vertical space to allow for easy loading of media into the input hopper.
2. Insert the PF-Pro Disc Printer Installation disk into the CD/DVD ROM drive on your Mac. Open the drive after the drive mount appears on the desktop and then open the Mac folder.
3. Copy the **DiscLabel** file from the disc to any location on your Mac if you will be using DiscLabel to design your print images.
4. Double-click the **Microboards Disc Printer.mpkg** icon. Follow the on-screen instructions, read and agree to the end user license agreement.
5. When prompted, enter your administrator password.
6. When prompted, click **Install**. Once the installation has completed, click **Close**.
7. Install all 4 Ink Cartridges (PFP-HC-CYAN, PFP-HC-MAGENTA, PFP-HC-YELLOW, and PFP-HC-BLACK) and 2 printheads.
8. Plug in the AC power cord to the back of the PF-Pro Disc Printer.
9. Connect the square shaped end of the USB cable to the back of the PF-Pro Disc Printer.
10. Connect the flat end of the USB cable into a USB 2.0 port in your Mac.
11. Turn on the PF-Pro Disc Printer.

Adding the PF-Pro Printer

1. Click the **System Preferences** icon in the Dock.
2. Select **Print & Fax**, then click the **Add** or **+** button to add a printer.
3. Select **PF-Pro** from the list and click the **Add** button.
4. Once the PF-Pro Printer has been added, it will appear in the available printers list.



Installation of the PF-Pro Disc Printer is complete. Next, the printer will need to be aligned and the robotics configured prior to burning and printing disks.

Printer Alignment

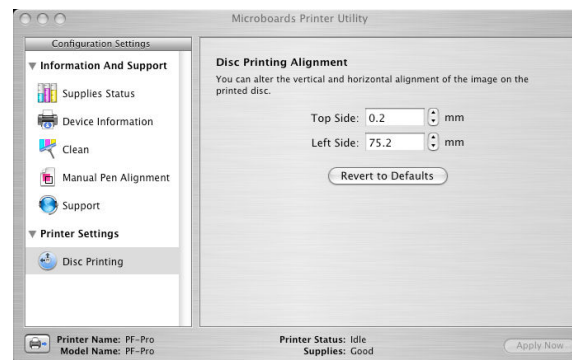
Verify the printer alignment the first time you use the Publisher. You may need to align your printer before the printed images will be centered on the media. Changing the brand or type of media you are using may also require small alignment adjustments.

To set these values, please follow the steps listed below:

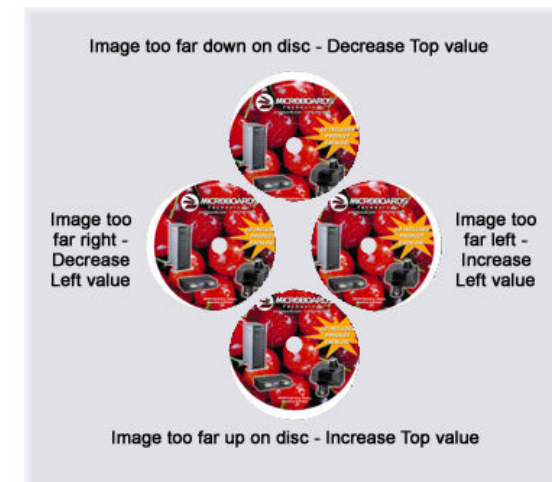
1. Install the drivers, then add the PF-Pro Printer as detailed above, or in the Installation section of the **User's Manual**.
2. Click the **System Preferences** icon in the Dock.
3. Select **Print & Fax** from the options in the System Preferences.
4. Highlight the **PF-Pro** printer and click the **Utility** button to open the Microboards Printer Utility.
5. Select **Disc Printing** from the drop-down list.
6. Set the **Top** and **Left Side** alignment values to the necessary values.

These settings will change the size of the top and left margins, respectively. Decreasing the values will move the image up or to the left, increasing will adjust down or to the right.

7. Click the **Apply** button to save the changes, found on the bottom of the Microboards Toolbox window.



8. Place a blank disc into the input hopper. Select and print an image that will fill the print surface.
9. Check the printed disc. If the settings are correct, the image should be centered on the disc. If not, **repeat steps 5 through 8**, changing the **Top** and **Left Side** amounts as shown in the graphic below.



10. Fine tuning may be required for different brands of media or different printing applications to provide full surface coverage.

For further details on these processes, please refer to the appropriate sections of the PF-Pro Disc Printer User's Manual.

Installation Troubleshooting Guide

Hardware not installing	<ol style="list-style-type: none"> 1. Turn on power to PF-Pro Disc Printer (back panel) 2. Reseat USB connection 3. Installation completed?
Printer not responding	<ol style="list-style-type: none"> 1. Has the PF-ProPrinter been added? 2. Turn on power to Printer (front panel).

In order to guarantee quality results from the PF-Pro Disc Printer,

ONLY MICROBOARDS PFP MODEL INK CARTRIDGES CAN BE USED!

As is true with all printers, the quality of ink cartridge and the quality of the ink within the cartridge will affect your output. To ensure quality results, the PF-Pro Disc Printer will not operate with any other ink cartridges in place.

The use of refilled ink cartridges will void your warranty!

The Microboards PF-Pro Disc Printer Installation disc includes a copy of DiscLabel Limited from Smile Software for use in designing and printing disc labels on your PF-Pro Disc Printer. The DiscLabel application is full-featured for printing discs on the PF-Pro Disc Printer. Advanced features such as printing jewel case inserts or disc labels on equipment other than a Microboards Disc Printer can be added with an upgrade to the Full version, available from Smile Software.

To upgrade to the Full version, visit Smile Software's website, smilesoftware.com. Click the link to DiscLabel for information on pricing and to purchase the upgrade.

Installing DiscLabel

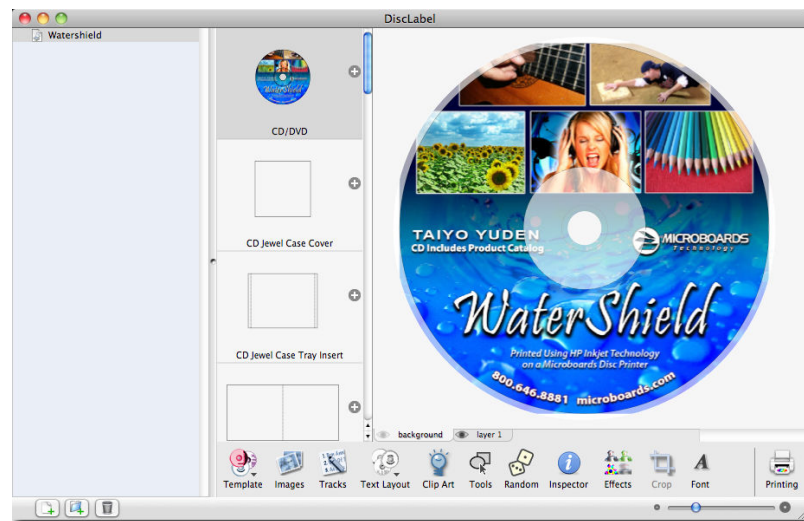
Simply copy the DiscLabel file on your Microboards Disc Printer installation disc to any location on your Mac. No installation is needed.

Running DiscLabel

The Limited application will give you the option of purchasing the Full version or continuing to use the Limited each time the application is started. If you choose to upgrade to the Full version, you will be provided with a Serial Number from Smile Software that will only need to be entered one time.

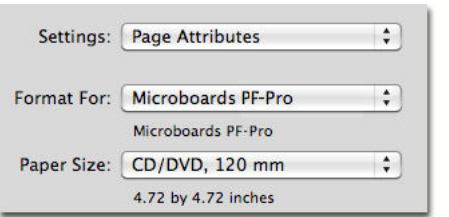
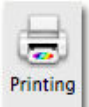
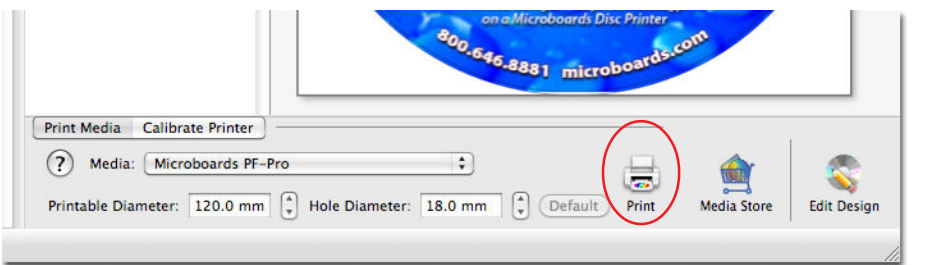
Once the Design window opens, you can create your own disc labels using Smile Software's pre-designed templates (requires an internet connection) or by creating a new blank design and building a disc label using your own image files.

Use the Help menu in DiscLabel for more information on creating your disc labels.

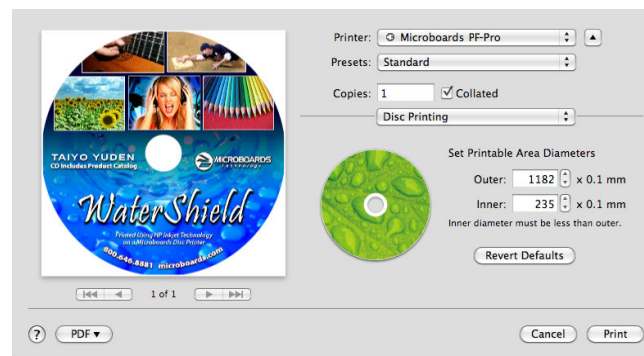


Printing your Disc Labels

To print your disc labels directly from DiscLabel to a Microboards Disc Printer, follow these steps:

1. Check the **Page Setup** settings under the **File** menu. Be sure the **Microboards PF-Pro** and **CD/DVD, 120 mm** are selected.
 
2. Click **OK** when these settings are correct.
3. Click the **Printing** button in the lower right corner.
 
4. Select **Microboards PF-Pro** from the list of Microboards printers in the **Media** drop-down list.
5. Verify the **Printable** and **Hub Diameters**. It is recommended that the Hub Diameter setting be left at the default, as the PF-Pro Disc Printer will mask the image based on the diameter settings that are specified in the printer itself.
 

6. Click the **Print** button.
7. Select the **Microboards PF-Pro** printer. Enter the number of **Copies** you want and select **Disc Printing** to verify the **Printable Area Diameters**; use the diameter settings that are appropriate to the media type you are using.
8. Click the **Print** button when you are ready to print.



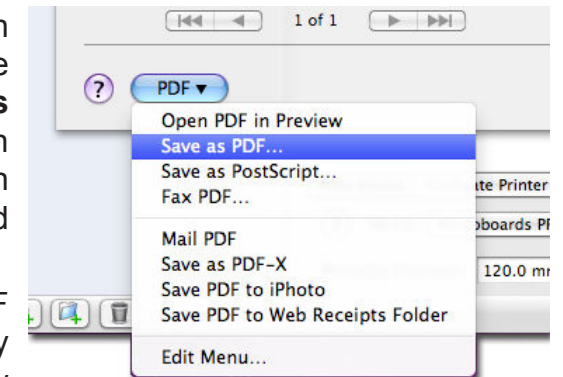
Saving the Disc Label

If you want to save the disc label design for future use in DiscLabel, select **Save** from the **File** menu. This will save the current label design using the name that is highlighted in the left panel. Clicking any of the listed label designs in the left panel will open that design.

Saving the Label as a PDF

If you want to print the disc label at a later time without using Smile Software's DiscLabel application, follow the directions for printing the label through step 7, omitting step 8.

Instead, click the **PDF** button in the lower left corner of the Print window. Select **Save as PDF...** from the drop-down menu. Choose the location and the name of the file and click the **Save** button.



Once the file is saved in PDF format, you can print from any application that can display PDF files directly to your Microboards PF-Pro Disc Printer. The PDF file can also be used for printing to a Microboards PF-Pro Disc Printer on other Macs on which Smile Software's DiscLabel application is not installed.

Exporting the Label as an Image File

Smile Software's DiscLabel application allows you to export your label design as an image file in such formats as a .tif, .jpg, .png, and bitmap, but you will need to purchase the upgrade from the Limited version to the Full version from Smile Software before you can do so.

Once you have upgraded to the Full version, you will be able to print your disc label to your PF-Pro Disc Printer from these image files using any application capable of opening them.

Note on DiscLabel's Auto Update

Do not use the Auto Update feature unless you have upgraded to the Full version of DiscLabel!

If the Auto Update is run with the provided Limited version, the generic Demo version will be installed, which will super-impose a **Demo** label on all printed or pdf output.