

GX-2 Disc Publisher Installation Quick Reference Guide

for Windows 7, Vista, and XP

For a more in-depth look at the installation process, please refer to the Installation section of the User's Manual.

Be sure your computer meets the Minimum System Requirements as stated in the User's Manual and that you have read these instructions and the Manual prior to contacting Microboards Technical Support with installation or configuration questions!

Do NOT connect your GX-2 Disc Publisher to your computer until you are told to do so!!



GX-2 Disc Publisher Installation:

You should not attempt to install the GX-2 Disc Publisher unless you are logged on to your PC with administrative rights.

The hardware and much of the software installation will occur without intervention.

1. Unpack the GX-2 Disc Publisher and place it in the selected workspace. This space should have enough vertical space to allow for easy loading of media into the input hopper and have enough room to the back of the G3 Disc Publisher to allow the unloading of rejected discs.
2. Insert the GX-2 Disc Publisher Installation disk into the CD/DVD ROM drive on your computer. The installer should open automatically.



If the installer does not automatically open, click the **Start** button and select Run from the Start menu. Click the **Browse** button and go to the CD/DVD drive, highlight **MBInstall.exe**, click the **Open** button, then click **OK**.

Prerequisite Windows components may need to be installed before the Disc Publisher can be installed. If any prerequisites are not present, they will be installed at this point. You will not be able to install your Disc Publisher without installing the prerequisite components. You may need to reboot the PC after any prerequisites are installed. The Disc Publisher installer will launch automatically after rebooting.

Select **Microboards GX-2 Disc Publisher** from the list, then click the **Install Microboards GX-2 Disc Publisher** button that appears.

3. You will first be guided through the hardware setup. **Please follow all directions on each window before clicking the Next button.**
4. After the physical hardware setup is complete, you will be instructed to connect the GX-2 Disc Publisher to the computer. Once this occurs, Windows will find your new hardware and run through the driver installation process.
5. Click the **Finish** button when complete. If the hardware is still being installed at this point, you will be asked to wait until that process is complete.
6. Click the **Finish** button to begin the Disc Publishing software installation process.
7. **Rebooting your PC is required before attempting to run your G3 Disc Publisher!** Click the **Finish** button to do so.

The Microboards Printer Toolbox Installation

The Microboards Toolbox is installed silently during the G3 installation. This application is used for general maintenance functions.

After the installation completes, the Toolbox will start up. You will see an icon appear in the tool tray in the lower right corner of your Windows desktop. To access the Toolbox, double-click the icon circled below.

The Toolbox will also automatically start up after rebooting the PC.



For more information on configuration options, please see the GX-2 Disc Publisher Configuration Quick Reference Guide on the other side of this page, or refer to the appropriate sections of the User's Manual.

Windows Configurations for Non-Administrative Users

To allow users who are logged on to your PC without administrative privileges to use PrintWrite, a few final steps must be taken. You will need to be logged in as an administrator to perform these steps.

If you only have users with administrative rights on your PC, or do not intend to allow non-administrative users to run PrintWrite, you will not need to perform the following steps.

Sharing the PrintWrite Working Directories

If PrintWrite is to be run by users logged in as Standard or other Non-Administrative user types, the main PrintWrite application directory will need to be shared to allow those users access to the necessary files and directories. The main application directory will be the same as the directory specified during the PrintWrite installation. The default installation directory is **C:\Program Files\Microboards\PrintWrite**; if you changed the location, you must share the directory you selected.

You will need to specify that you are allowing users to modify the contents of the PrintWrite directory.

You will also need to share the **C:\MBSDK Data** directory in the same way. The location of this directory cannot be changed during the installation. This directory will not appear until the first time PrintWrite is launched.

Windows Firewall

You may need to add two applications, PrintWrite.exe and ServerManager.exe to the Windows Firewall Exceptions list, depending on your PC's Windows Firewall settings. If Windows Firewall is on and you do not add them to the exceptions list, any non-administrative users will be blocked from running PrintWrite.

Installation Troubleshooting Guide:

Hardware not installing on PC	1. Turn on power to GX-2 Disc Publisher (back panel) 2. Reseat USB connection 3. Installation CD in drive?
Printer not responding	1. Ink cartridge installed correctly? 2. Turn on power to Printer (front panel). Firmly press the power button and wait several seconds for the printer power LED to come on.
Drive not appearing in Windows Explorer	1. PC needs to be rebooted 2. Mapped drive conflict: Disconnect GX-2 Disc Publisher and reboot PC. Disconnect Network drives and remap to letters near end of alphabet. Reconnect GX-2 Disc Publisher.

In order to guarantee quality results from the GX-2 Disc Publisher,

**ONLY MICROBOARDS GX-300HC
COLOR INK CARTRIDGE CAN BE USED!**

As is true with all printers, the quality of ink cartridge and the quality of the ink within the cartridge will affect your output. To ensure quality results, the GX-2 Disc Publisher will not operate with any other color ink cartridge in place.

The use of refilled ink cartridges will void your warranty!

GX-2 Disc Publisher Configuration Quick Reference Guide

for Windows 7, Vista, and XP

GX-2 Disc Publisher Robotics Configuration

NOTE: You must complete the hardware, driver, and software installation prior to configuring the GX-2 Disc Publisher and aligning the printer. Please see the other side of this Guide for the Installation Quick Reference Guide, or refer to the Installation section of the User's Manual.

The GX-2 Disc Publisher robotics will need to be configured prior to use. When launching PrintWrite or Zulu2 for the first time, the Configuration screen will appear.

If these entries are not auto-populated, you will need to manually select the correct configuration.

Drive: Select the drive letter from the drop-down list. Verify the correct drive selection by clicking the **Test** button; the drive tray in the GX-2 Disc Publisher should eject and then retract.

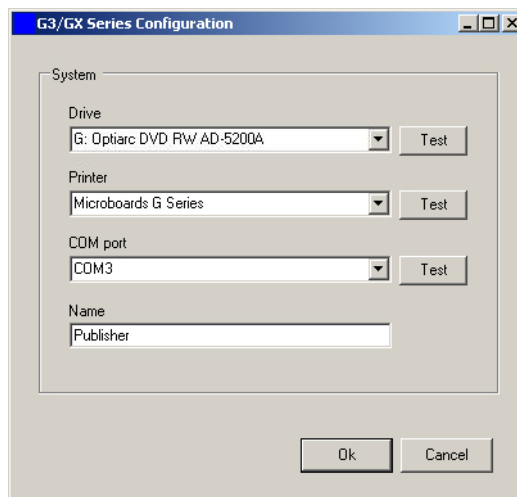
Printer: Select **Microboards G Series** from the drop-down list. Once selected, click the **Test** button to verify the selection; the belts will run if the correct printer has been selected.

COM Port: Select the COM port from the drop-down list that is specified by the PC as the USB Serial Port in the Windows Device Manager (see User's Manual for more information); generally, the correct port will be the largest port number listed. Verify the correct port selection by clicking the **Test** button to the right of the port list. The elevator below the input hopper will lift and then drop if the correct port has been selected.

Name: Enter in the name of the Disc Publisher, which defaults to **Publisher**.

Click the **OK** button to accept the selections and continue in the Disc Publishing software.

For more information on the configuration of the GX-2 Disc Publisher robotics, please refer to the Configuration section of the User's Manual.



Print Image Alignment

Your GX-2 Disc Publisher has been factory aligned to .1mm precision. Fine tuning may be required depending on the media brand and printable surface type you are using to provide full surface coverage.

1. Access the Printing Preferences for the Microboards G Series. How this is done will depend on the Operating System and the currently selected Start Menu layout.

Windows 7: Select **Devices and Printers** from the **Start** button.

Windows Vista: Select the **Control Panel** from the **Start** button. Once the Control Panel opens, select **Printer** from the **Hardware and Sound** section.

Windows XP, Start Menu layout: Select **Printers and Faxes** from the **Windows Start** button.

Windows XP, Classic Start Menu layout: You will need to go to the **Settings** selection, then to the **Printers and Faxes** from the **Start** button.

NOTE: THE ALIGNMENT VALUES MUST BE ENTERED THROUGH THE PRINTERS AND FAXES WINDOW FOR THE SETTINGS TO BE USED IN PRINTWRITE, NOT FROM WITHIN THE APPLICATION!!!

2. Right click on the icon for the **Microboards G Series** and select **Printing Preferences...**
3. On the **Print Quality** tab, select **Photo** for the **Print Mode** and **Best** or **Max DPI** for the **Print Quality**.

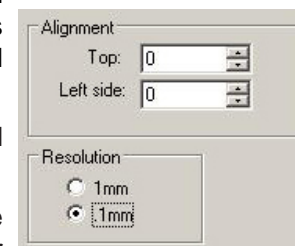
Photo Best or **Max DPI** should *a/ways* be selected when aligning the printer, in order to insure the greatest accuracy during the alignment process. Other settings may not result in the best alignment.

4. Select the **Alignment** tab. The **.1mm Resolution** setting must be selected before setting alignment values (see below). Set the **Top** and **Left Side** alignment values to those required for image alignment.

These settings will change the size of the top and left margins, respectively. Decreasing the values will move the image up or to the left, increasing will adjust down or to the right.

5. Click the **Apply** button to save the changes, found on the bottom of the Printing Preferences window.
6. Verify the alignment by printing a full disc image on the media. Repeat these steps if further alignment adjustments are required.

For further details on the alignment process, please refer to the section on Alignment in the GX-2 Disc Publisher User's Manual.



Printer Toolbox

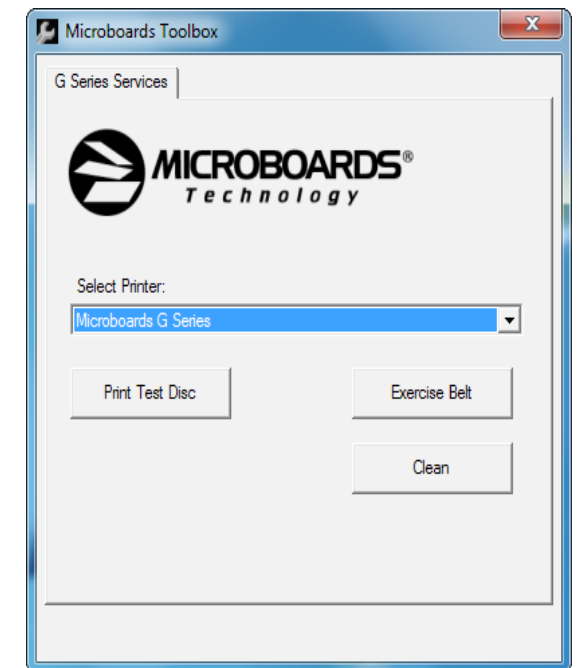
The **Printer Toolbox** contains several utility functions for the G3 Disc Publisher. The toolbox will open automatically after installation of the G3, and each time the PC boots up. It can also be run by double-clicking the **Microboards Toolbox** icon in the tool tray.



The functions of the Toolbox include:

- Test Print
- Belt Exerciser
- Printhead Cleaning Utility
- Low Ink warnings

For more information on the Toolbox, please refer to the User's Manual.



Be sure your computer meets the Minimum System Requirements as stated in the User's Manual and that you have read these instructions and the Manual prior to contacting Microboards Technical Support with installation or configuration questions!

In order to guarantee quality results from the GX-2 Disc Publisher,

ONLY MICROBOARDS GX-300HC COLOR INK CARTRIDGE CAN BE USED!

As is true with all printers, the quality of ink cartridge and the quality of the ink within the cartridge will affect your output. To ensure quality results, the GX-2 Disc Publisher will not operate with any other color ink cartridge in place.

The use of refilled ink cartridges will void your warranty!